

S13637 IMPRESSA XJ9 silber GII 683  
Ausgabe: 05.02.2016

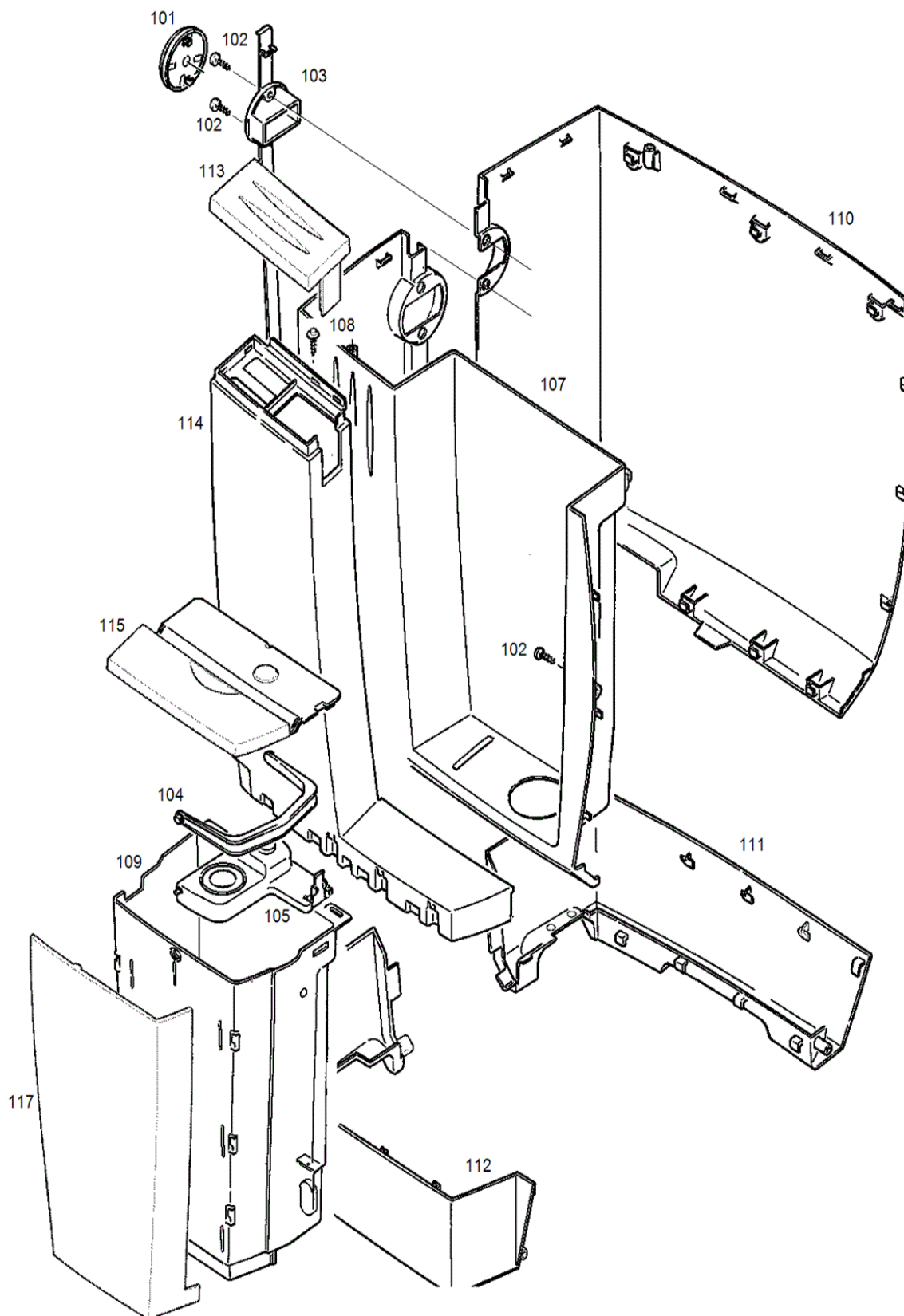


Der Ersatzteilkatalog gilt für folgende Artikel:  
13637 IMPRESSA XJ9 GII silber UL

Legende:

**(1) Gehäuseteile und Wassertank**

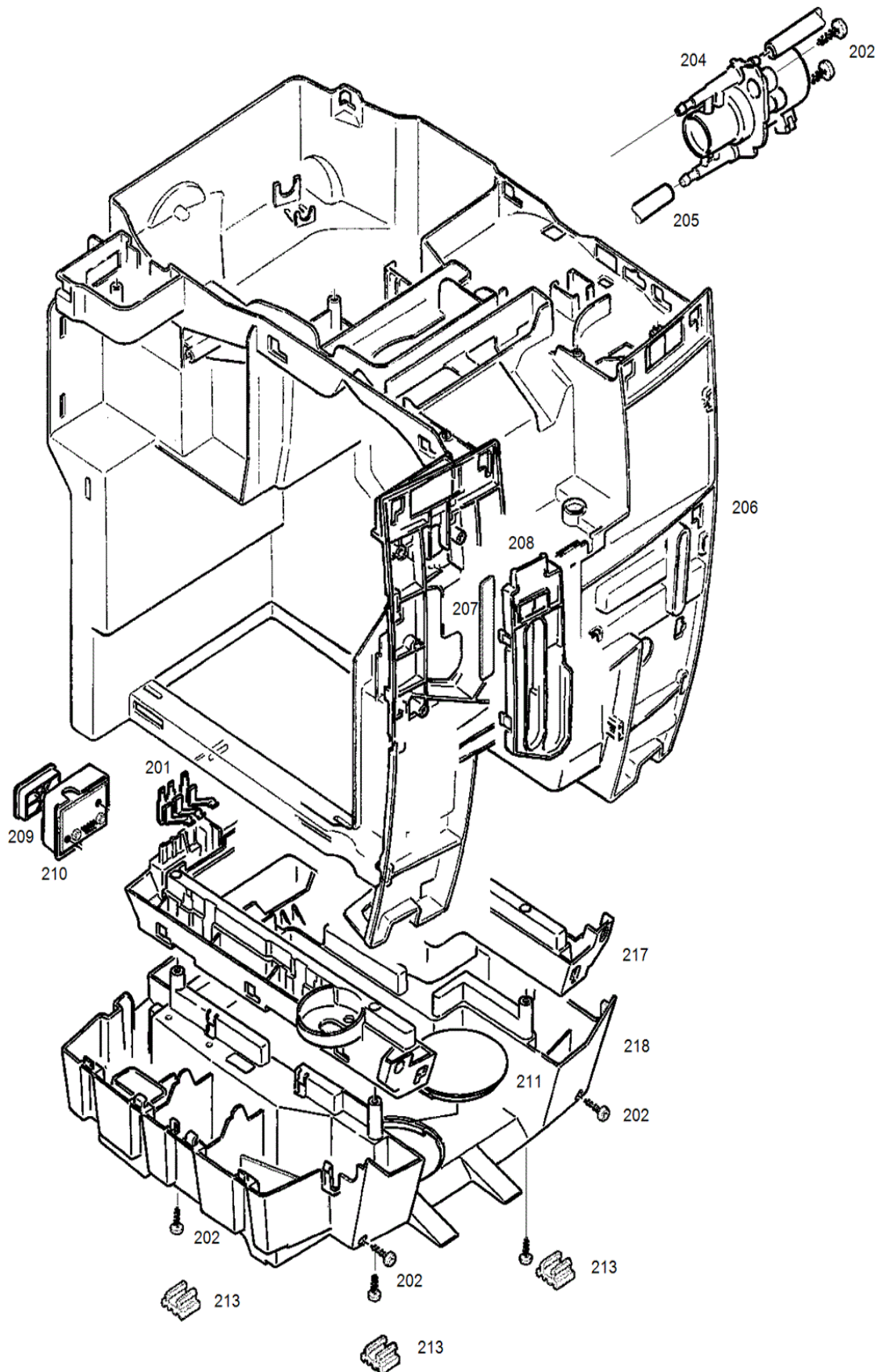
S13637\_01





**(2) Gehäuseteile**

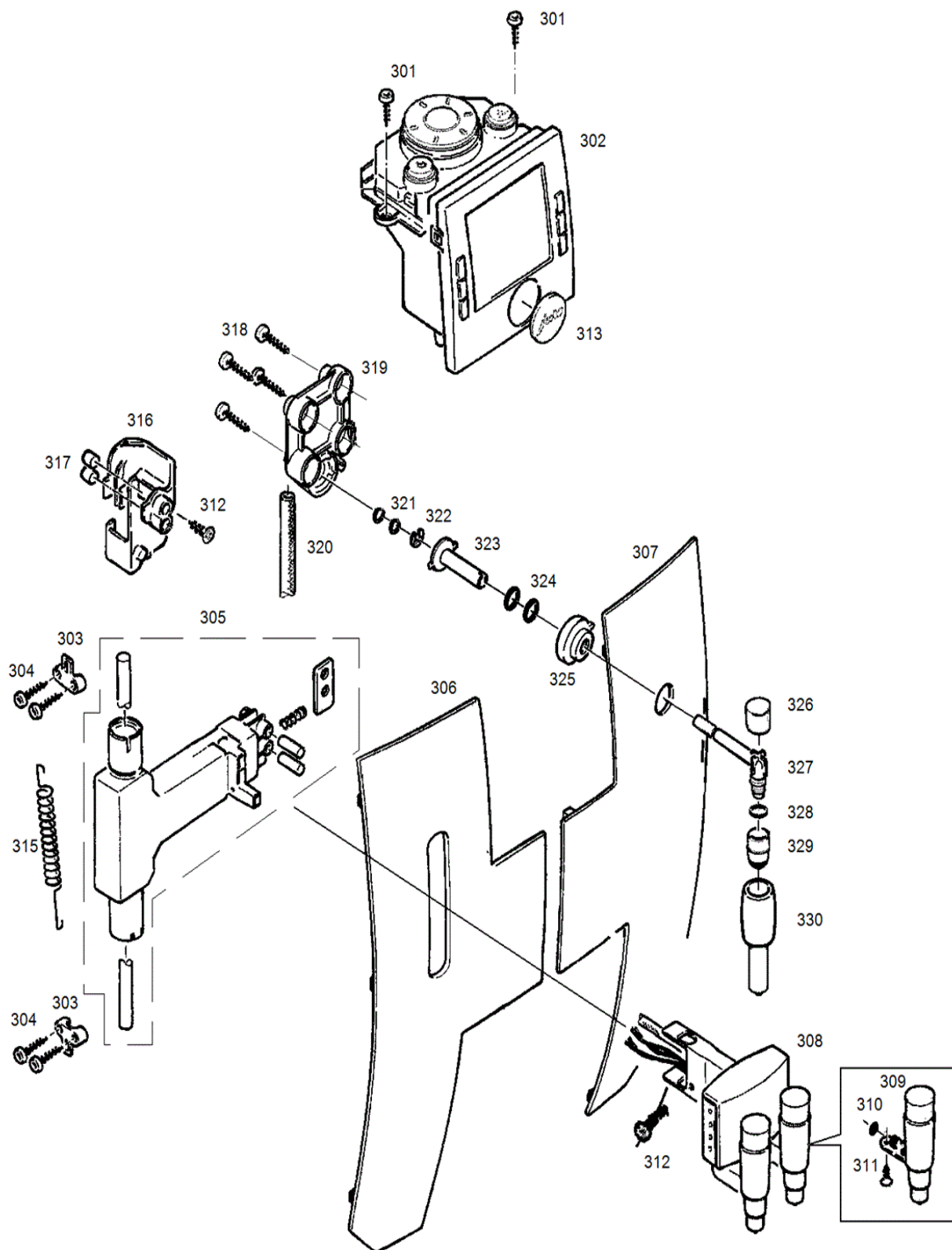
S13637\_02





### (3) Fronttüre

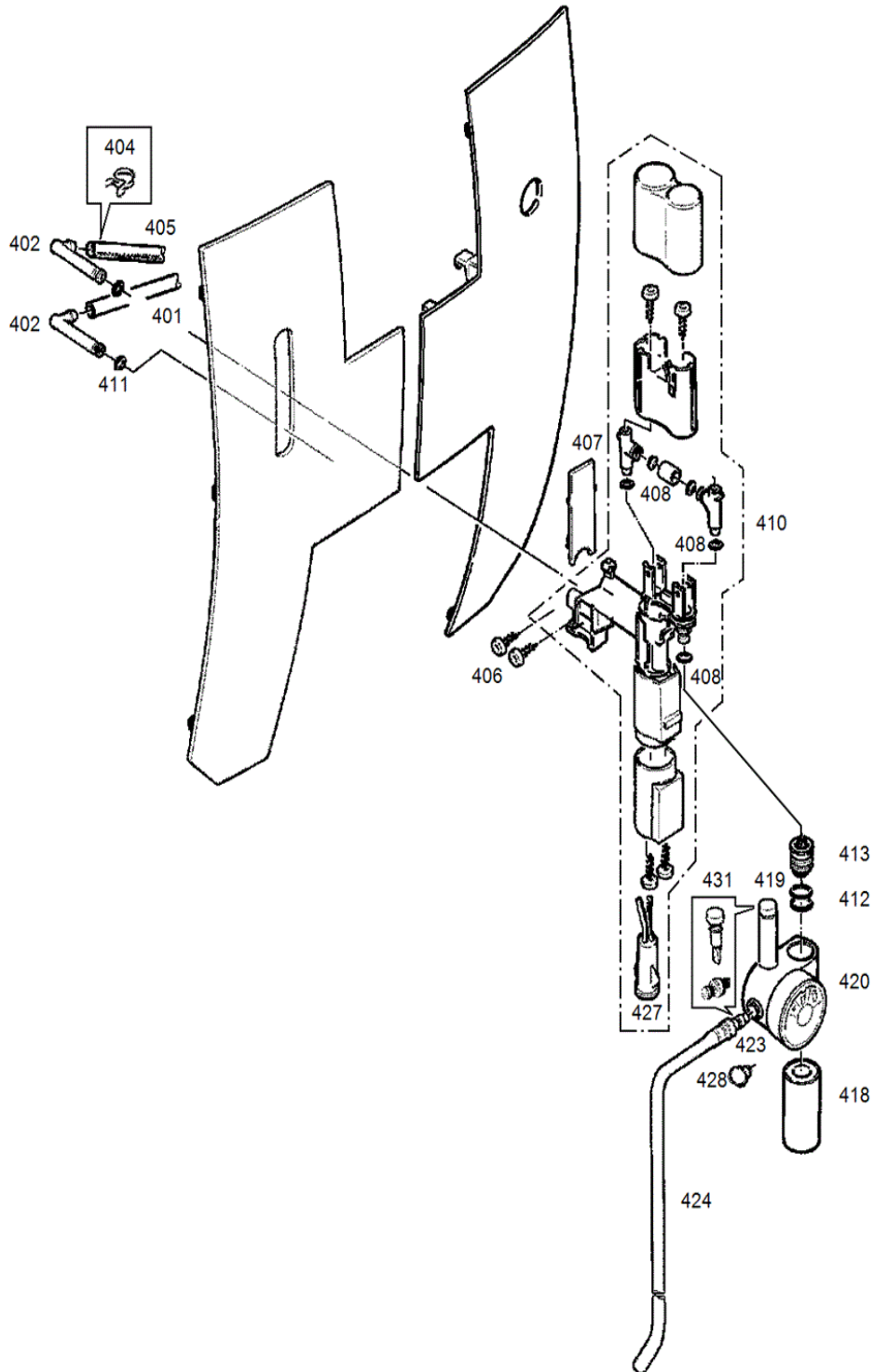
S13637\_03





**(4) Cappu**

S13637\_04

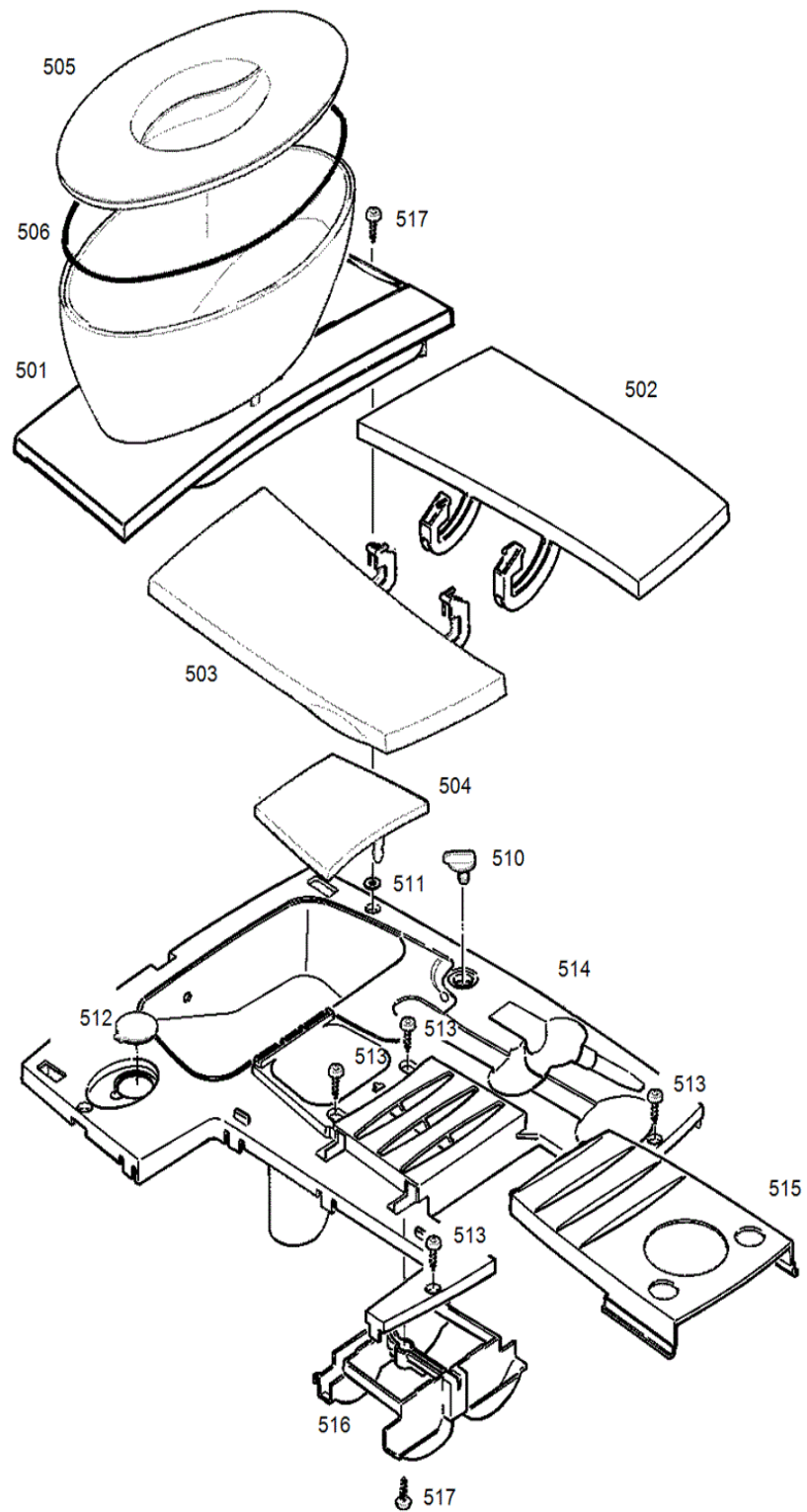






**(5) Gehäusedeckel**

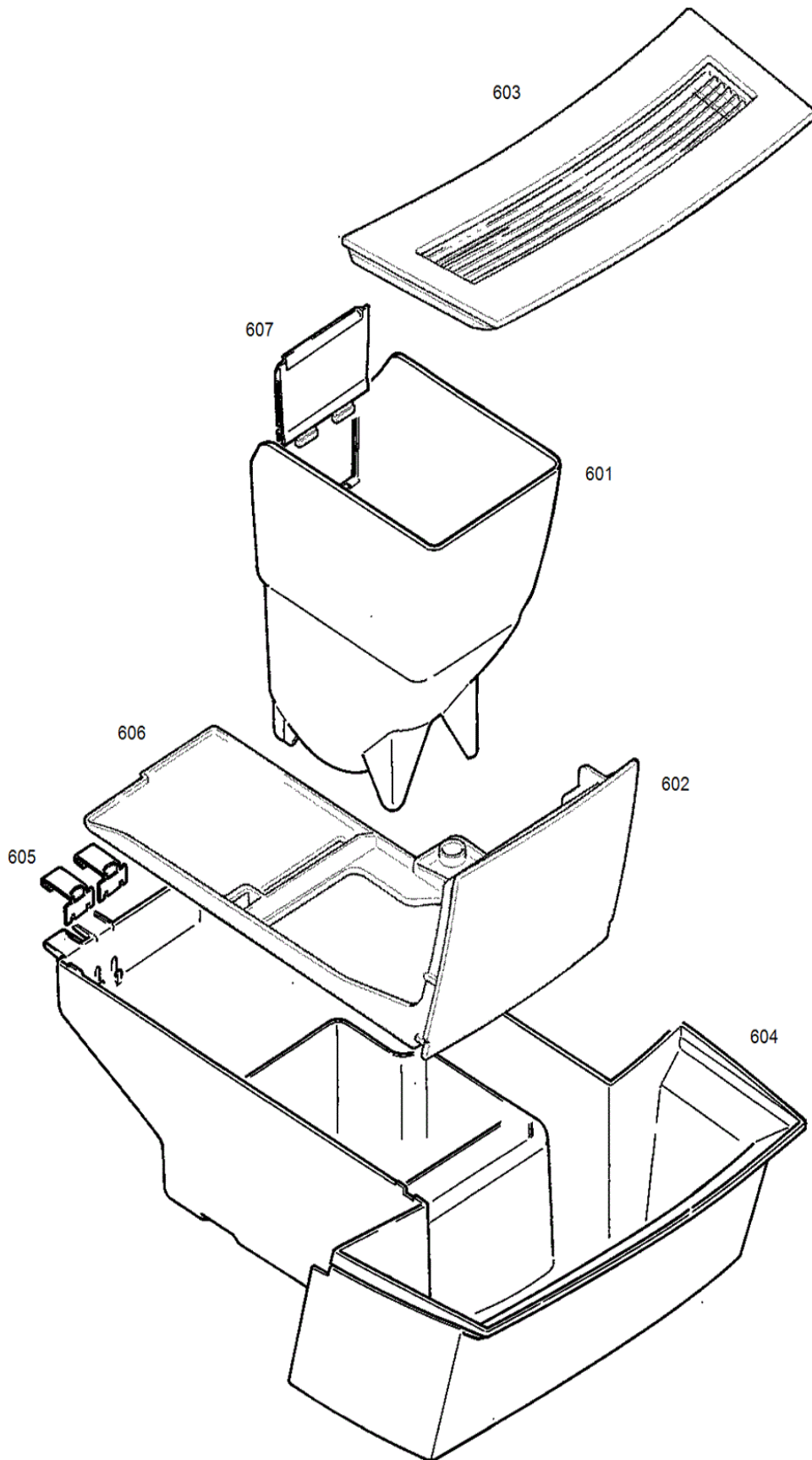
S13637\_05





**(6) Schale**

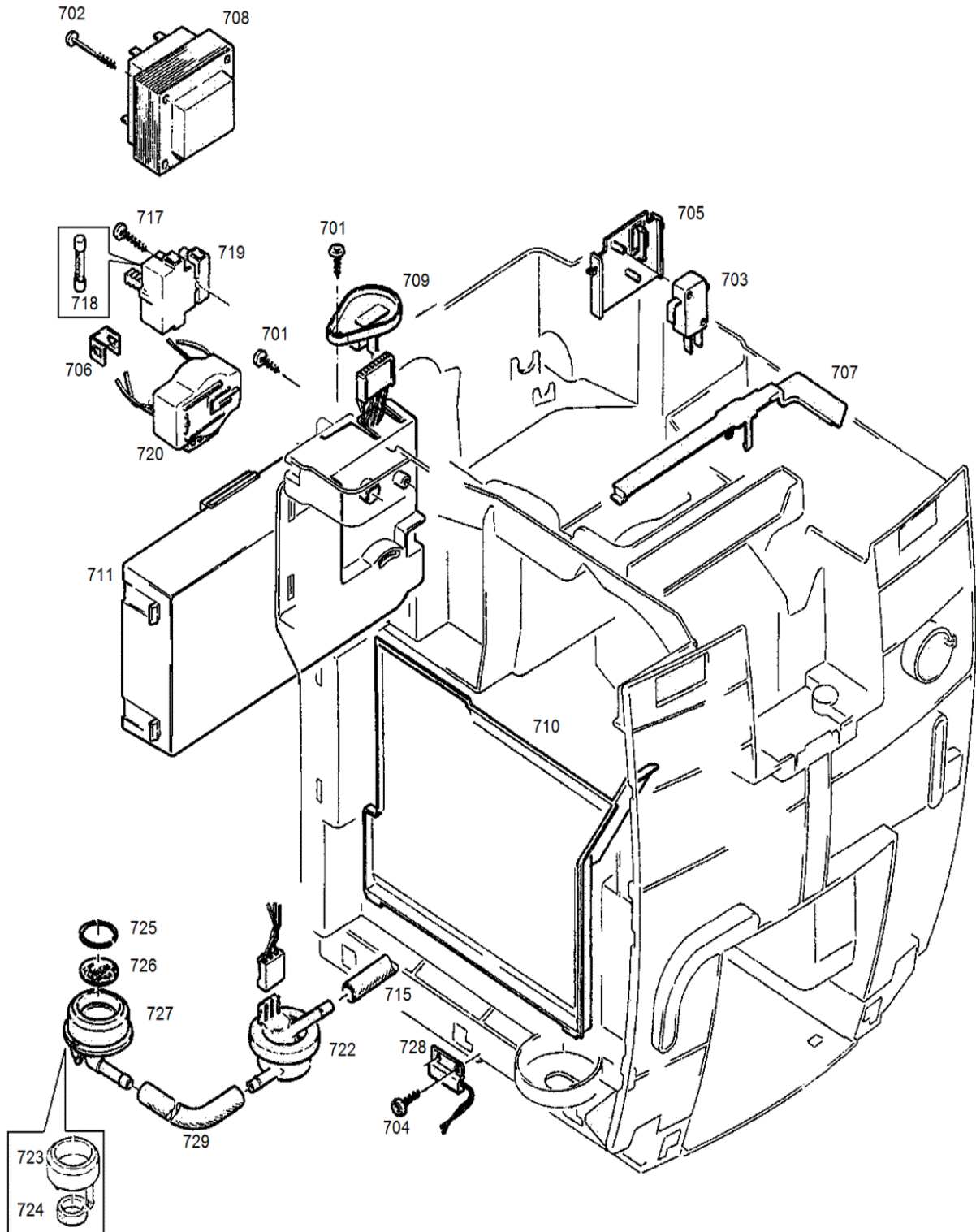
S13637\_06





**(7) Leistungsprint**

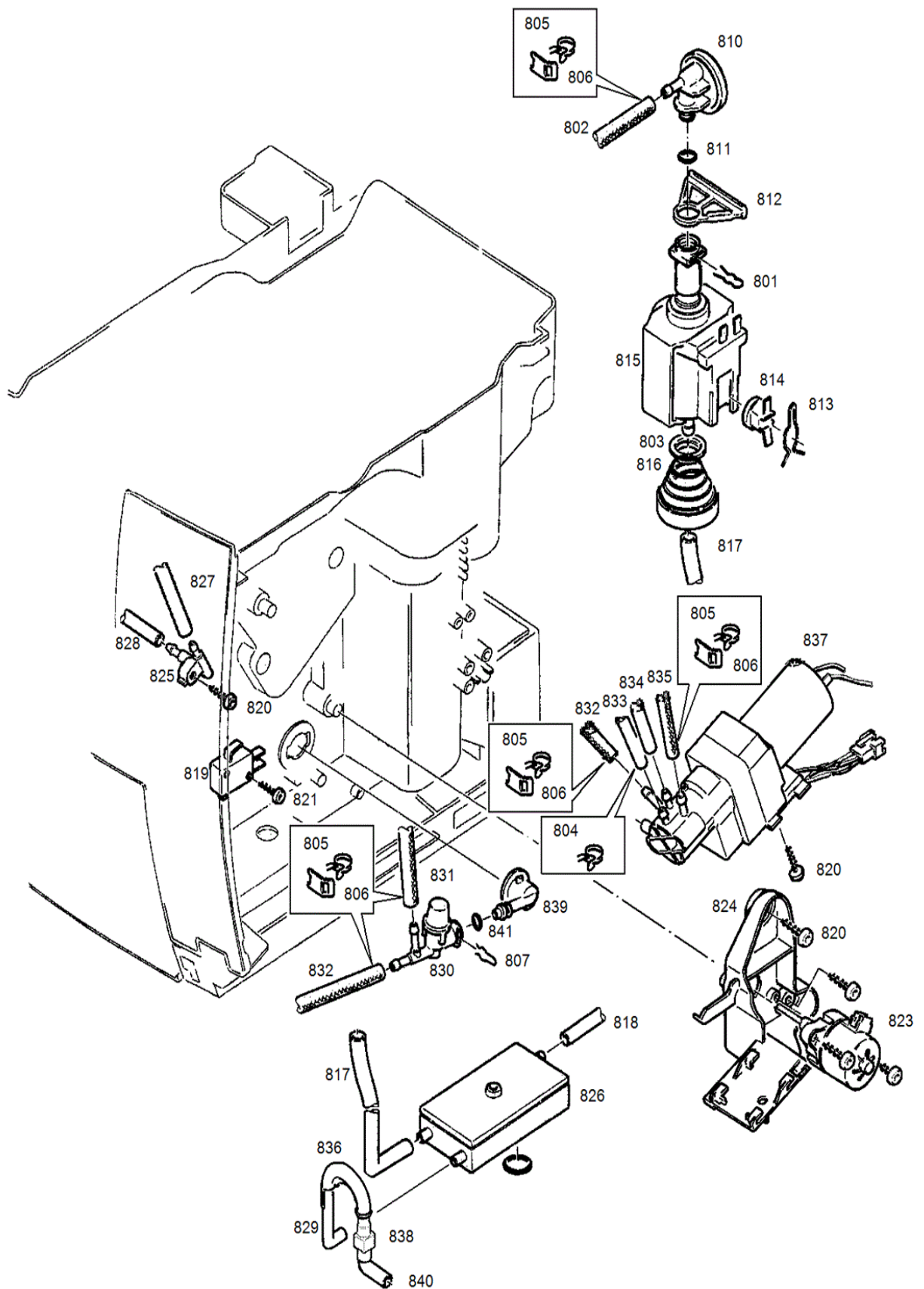
S13637\_07





**(8) Fluidsystem**

S13637\_08

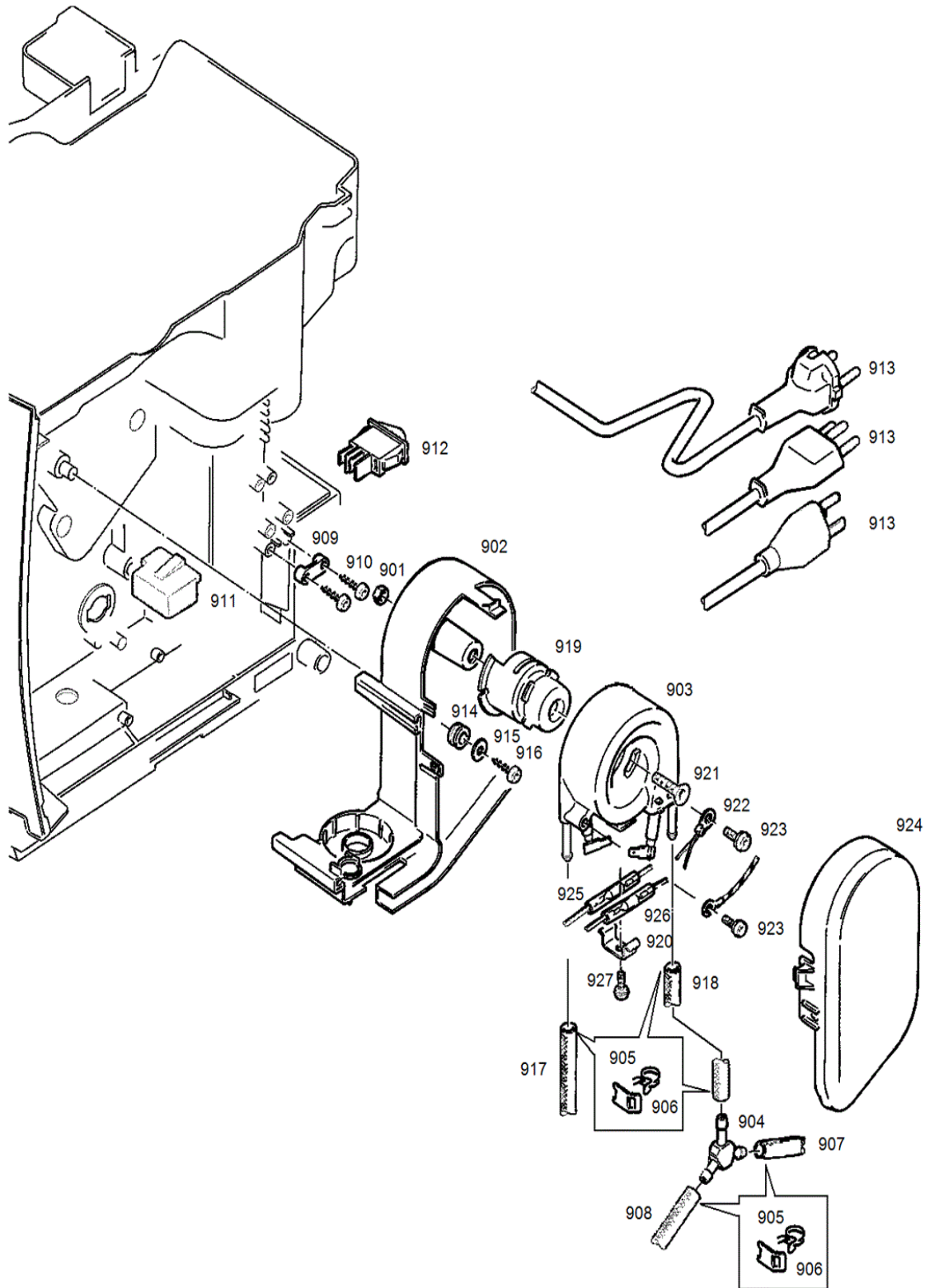




Art.-Nr.	Pos	Bezeichnung	Variante	Lager	SC
	0801	Klammer D=5mm brüniert		x	
	0802	Schlauch Silikon/Gewebe 315mm		x	
	0803	Pumpenauflage		x	
	0804	Schlauchklemme 7.0-7.5 RoHS		x	
	0805	Klemmfeder D=1.3mm V2		x	
	0806	Sicherungsblech zu Klemmfeder		x	
	0807	Klammer D=5mm brüniert		x	
	0810	Membrandämpfungselement V3		x	
	0811	O-Ring 100 Stk (einzeln 58775)		x	
	0812	Pumpenstütze schwarz 70 Sh		x	
	0813	Klammer Thermostat Inox		x	
	0814	Thermostat 115C/10A 1NT01L		x	
	0815	Pumpe SAP.HP4.V03 120V/60Hz		x	
	0816	Dämpfungselementkit		x	
	0817	Formschlauch Silikon		x	
	0818	Silikonschlauch 9x5x230mm		x	
	0819	Mikroschalter 125-250V AC		x	
	0820	Schraube KST/PT 3.5x12 vz-blau		x	
	0821	Schraube kst/PT 3.0x20		x	
	0823	Drainagemotor UCL13N04B1UZ12		x	
	0824	Träger Schrittmotor schwarz		x	
	0825	Fluid-Nippel Kaffee L-Form		x	
	0826	Wärmetauscher kpl. Eloxiert		x	
	0827	Silikonschlauch 6x3x130mm (K)		x	
	0828	Silikonschlauch 6x3x180mm (K)		x	
	0829	Formschlauch Silikon		x	
	0830	Auslaufventil Y kpl.		x	
	0831	Schlauch Silikon Gewebe D 4.2		x	
	0832	Schlauch Silikon/Gewebe 90mm		x	
	0833	Silikonschlauch 6x3x350mm		x	
	0834	Silikonschlauch 6x3x190mm (K)		x	
	0835	Schlauch Silikon/Gewebe Di 4.2		x	
	0836	Knickschutz 180° schwarz		x	
	0837	Mehrwegventil kpl.		x	
	0838	Fluid-Nippel I-Form		x	
	0839	Fluid-Andockbüchse schwarz		x	
	0840	Winkelschlauch Silikon		x	
	0841	O-Ring 4.48x1.78 EPDM		x	

**(9) Erhitzer**

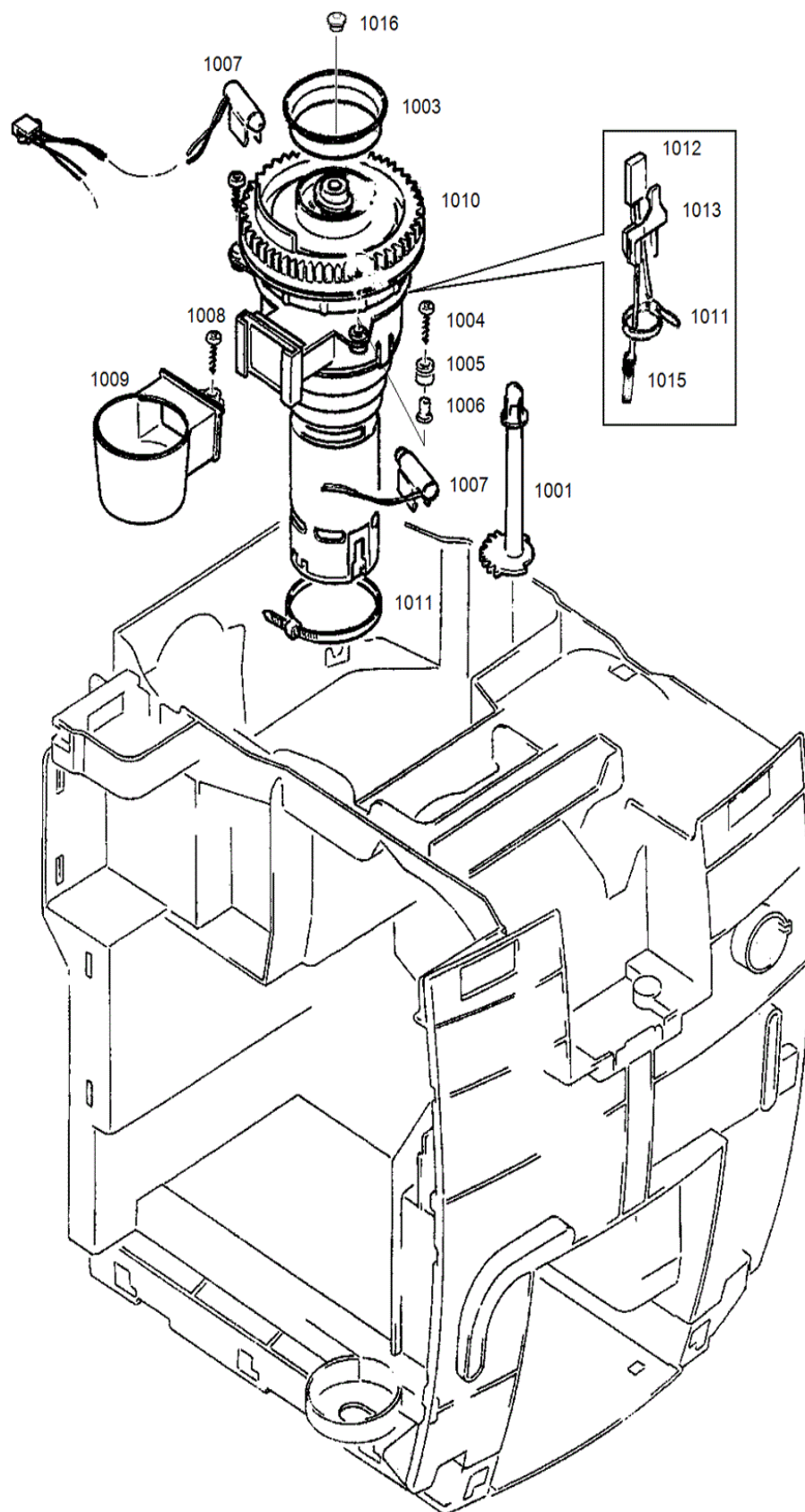
S13637\_09





**(10) Mahleinheit**

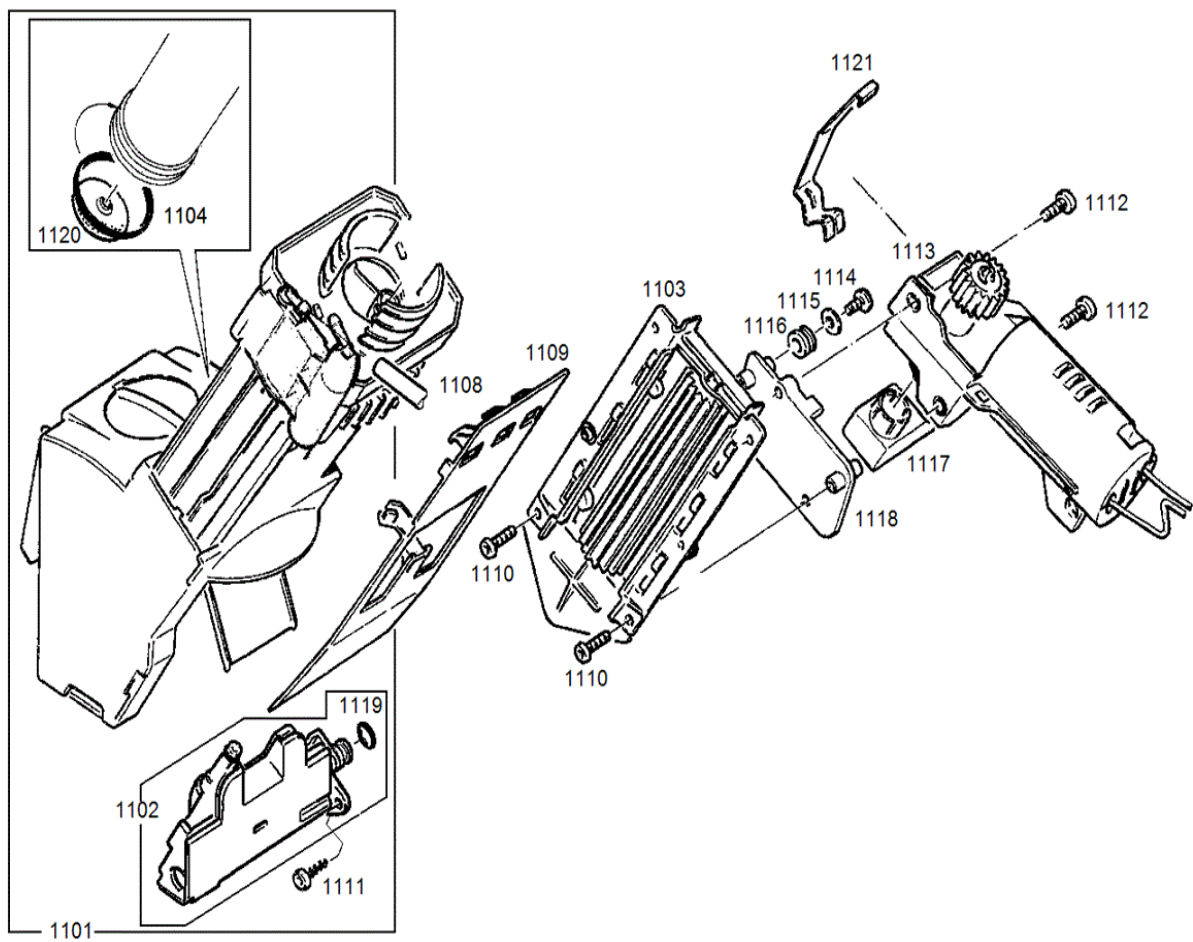
S13637\_10





**(11) Brüheinheit und Antrieb**

S13637\_11





**(12) Beilage**

S13637\_12

1

1201



Verpackung/  
Packing

1210



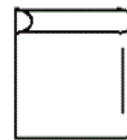
Betriebsmittel/  
Operational funds

1220



Hinweise/  
References

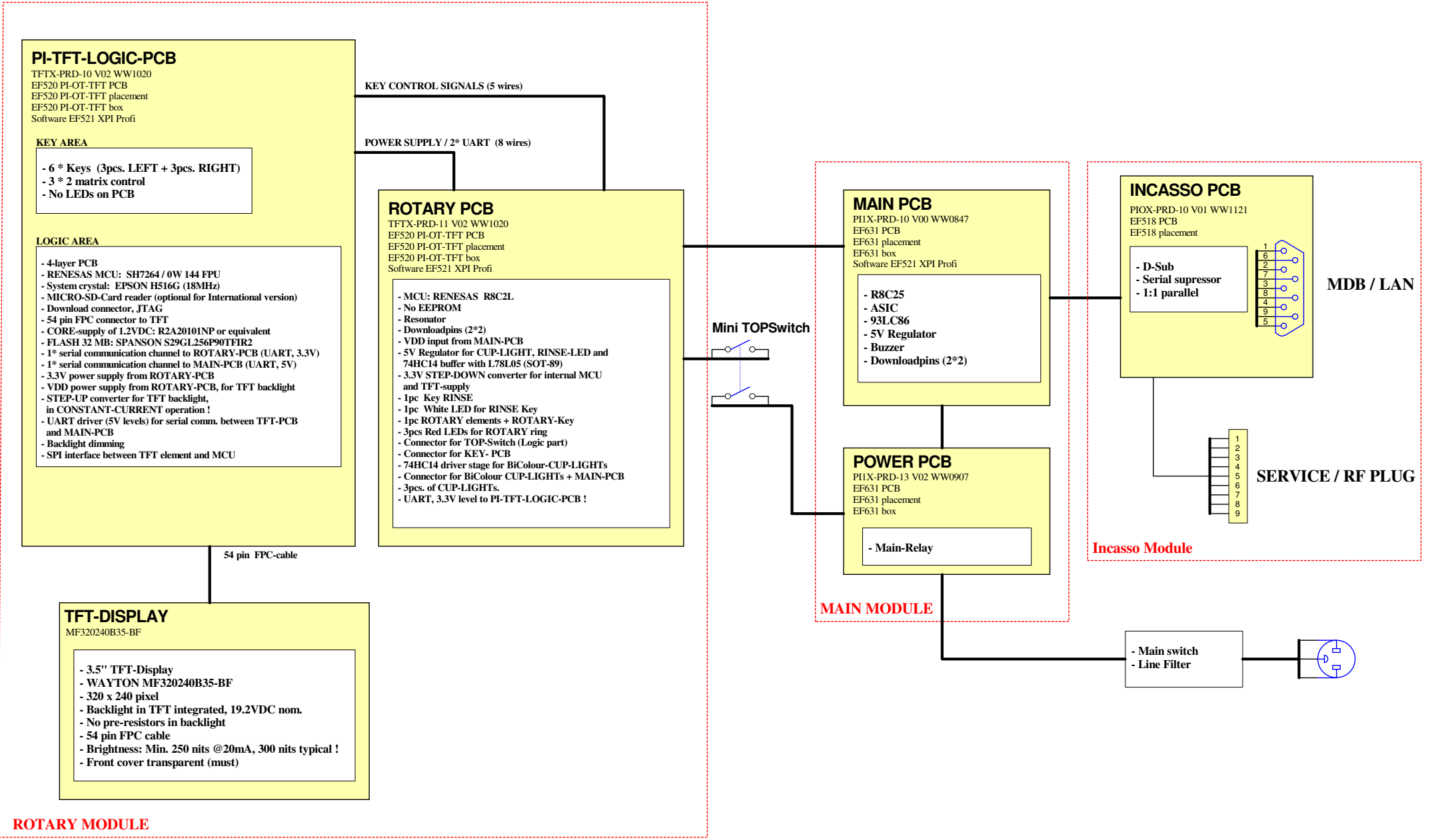
1240



Bedienungsanleitung/  
Operating instructions

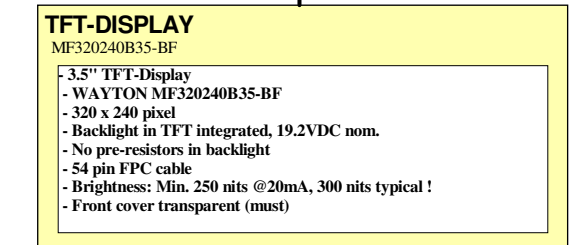
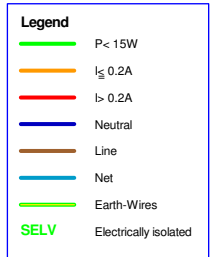
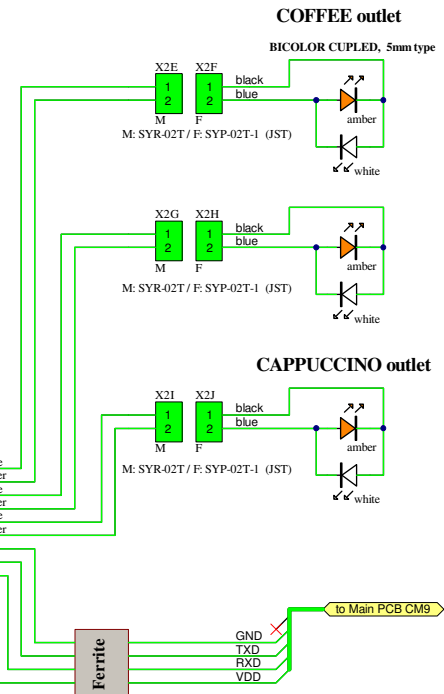
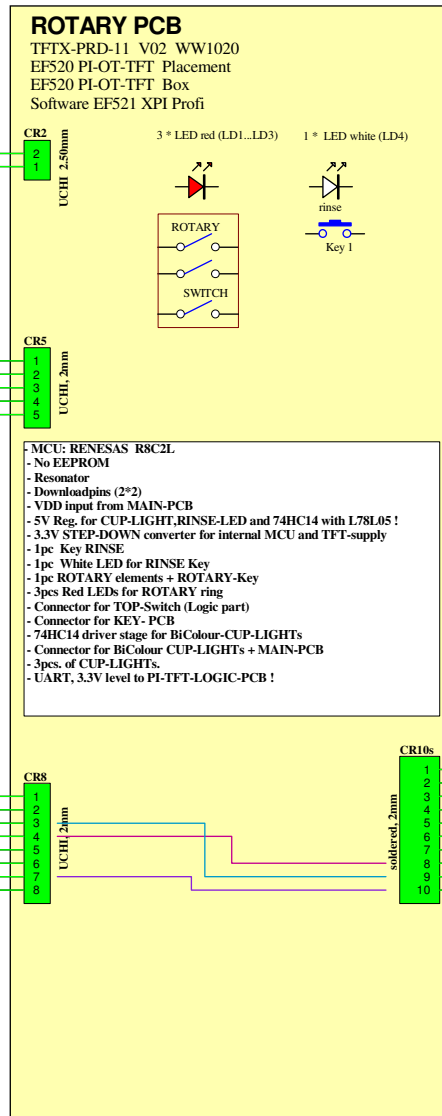
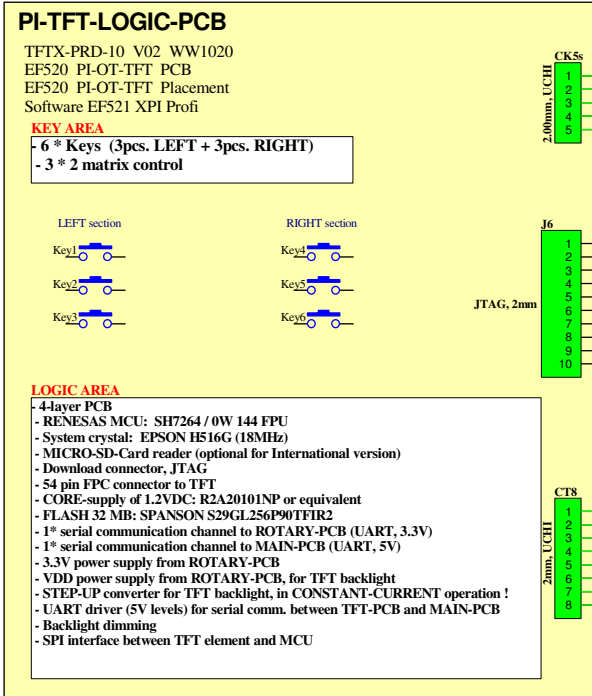
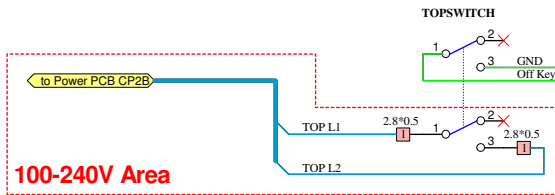






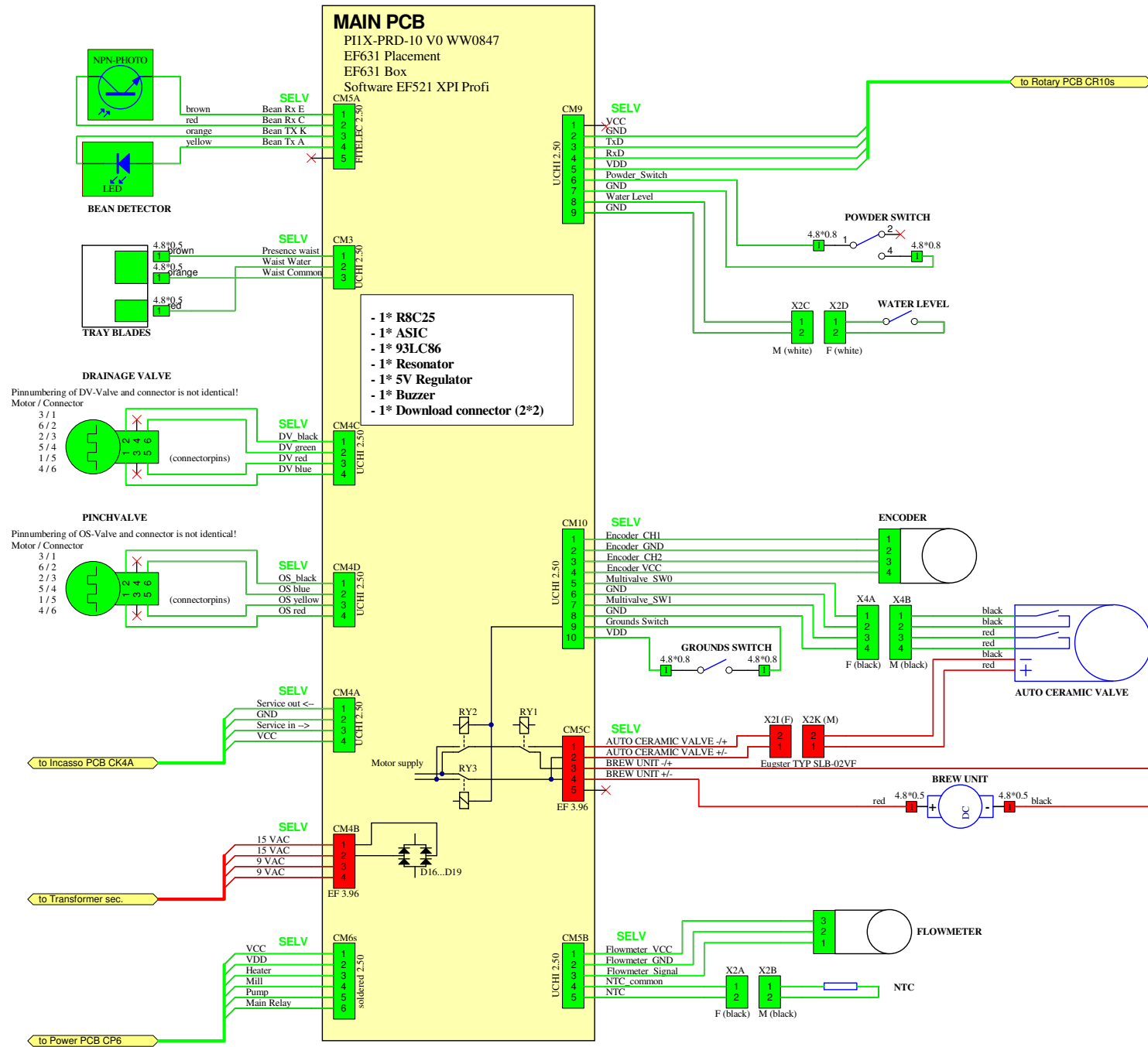
change notice	date	drawn	checked	approved	title
3 Insert new WAYTON-TFT	120814	Foltrauer Heinz			<b>EF521 XJ Profi Blockdiagram Overview</b> size <b>A3</b> drawingnumber <b>EF521 BL_0000 V01.SchDoc</b> Revision <b>120814</b>
change blockdiagram title to EF521 XJ Profi	110526	Ryser Daniel			
new template	101104	Ryser Daniel			





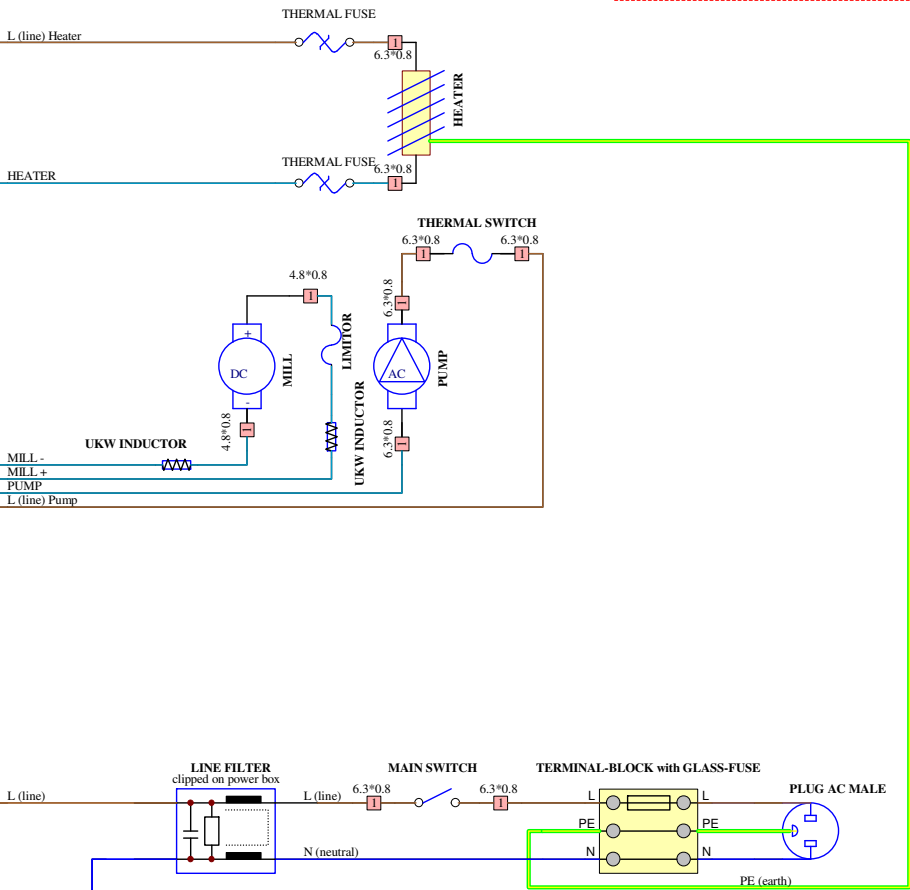
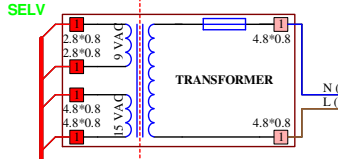
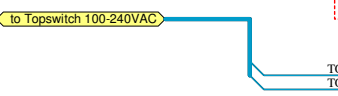
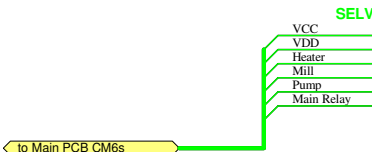
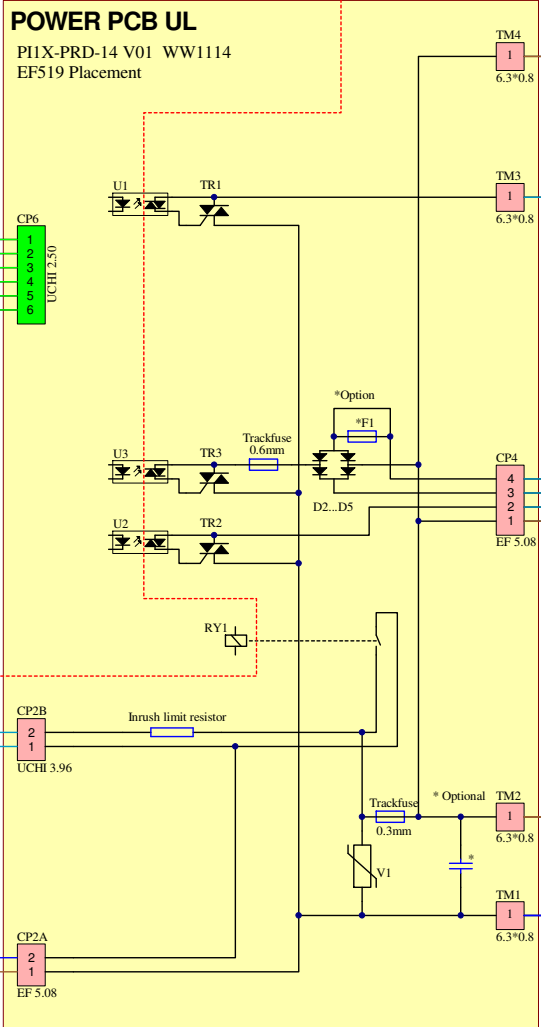
change notice	date	drawn	checked	approved	title	size	drawingnumber	Revision
Insert new WAYTON-TFT	120814	Foltrauer Heinz			EF521 XJ Profi Blockdiagram Rotary Module	A3	EF521 BL_0002 V01.SCHDOC	
correct Board Version on TFT-Modul to tftx-prd-10v02ww1120	111107	Ryser Daniel						120814
change blockdiagram title to EF521 XJ Profi	110526	Ryser Daniel						





change notice	date	drawn	checked	approved	title
Change textmarker to Incasso PCB from CI4A to CK4A	120427	Ryser Daniel			<b>EF521 XJ Profi Blockdiagram Main</b> size <b>A3</b> drawingnumber <b>EF521 BL_0001 V01.SCHDOC</b> Revision <b>120427</b>
Delete UKW-inductors on Brew Unit path --> Decision Jura	111107	Ryser Daniel			
change blockdiagram title to EF521 XJ Profi	110526	Ryser Daniel			

120V  
60Hz



120V area

**Approbation history**

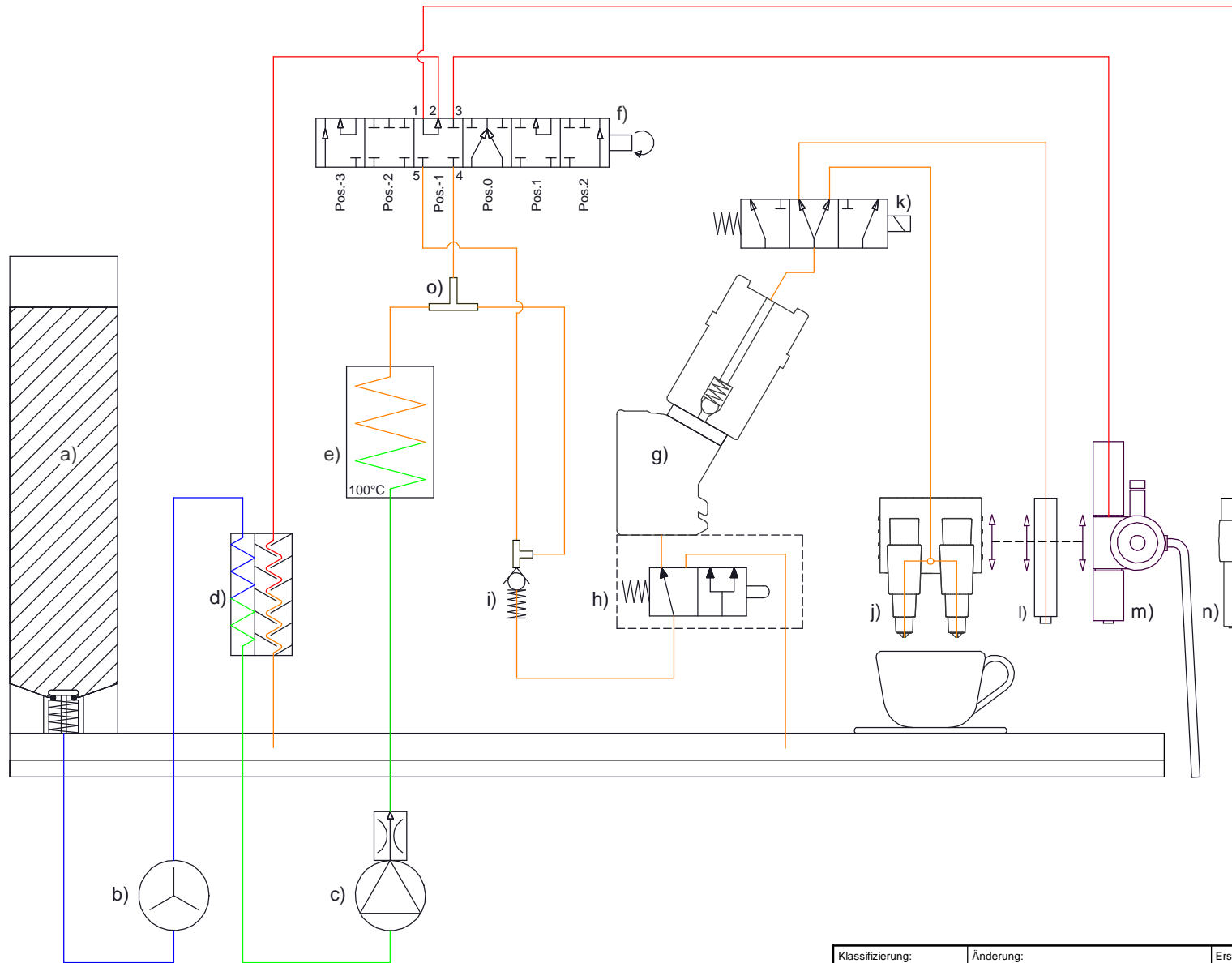
<b>TS1.0</b> - DAG: ESD/BURST/HF UL, TS1.0	<b>Results</b> Passed!	<b>Report</b> EMV-LAB 1226
<b>TS1.0</b> - UL: Approbation	<b>Results</b> Passed!	<b>Report</b> NoA 12CA15692, E93416 Vol. 1

**Legend**

	P < 15W
	I ≤ 0.2A
	I > 0.2A
	Neutral
	Line
	Net
	Earth-Wires
<b>SELV</b>	Electrically isolated

change notice	date	drawn	checked	approved	title
Integration of additional glass fuse at terminal block Update of approbation history	121022	Foltrauer Heinz			<b>EF521 XJ-PROFI Blockdiagram Power 120V 60Hz</b>
Set drawing version V00, for mass production. Update approbation history	120814	Foltrauer Heinz			size <b>A3</b> drawingnumber <b>EF521 BLM0001 V01.SCHDOC</b> Revision
change L(line) from transformer from blue to brown colour	120427	Ryser Daniel			<b>121022</b>





**Legende:**

- a) Wassertank gross mit 6-Kant Clearlypatrone 120 l
- b) Flowmeter
- c) Pumpe mit Membranregler Typ: Sysko SAP.HP4; 110/120V
- d) Wärmetauscher/Kondensator Z5
- e) Thermoblock 2010 (120V/1400W)
- f) autom. Keramikventil Z5
- g) Brüheinheit clean
- h) Drainageventil mit Schrittmotor
- i) Auslaufventil BE, 4bar (J-Linie)
- j) Kaffee-Breitenverstellauslauf
- k) Quetschventil mit Schrittmotor
- l) Kaffeeauslauf bei Cappu (analog EF519)
- m) Cappu Z7, höhenverstellbar (analog EF519)
- n) Connector V2 mit HW-Rohr kurz
- o) y - Stück

Klassifizierung:	Änderung:	Erstellt/Gez.	E.Ullmann	08.03.12	Massstab	mm	
		Geändert					
Gewicht:	Material:	Geprüft/Freig.	P.Büttiker	08.03.12	Format	Blatt / Anz.	
Rohmass:	Behandlung:	Status:			A3	1 / 1	
<b>Jura</b> Jura Elektroapparate AG CH-4626 Niederbuchstien <a href="http://www.jura.com">www.jura.com</a>					Benennung:		Artikel-Nr.
					<b>Fluidsystem</b> XJ Profi, EF521, 120V/60Hz		Zeichnungs-Nr.
					0030N043-ds00,00.00		